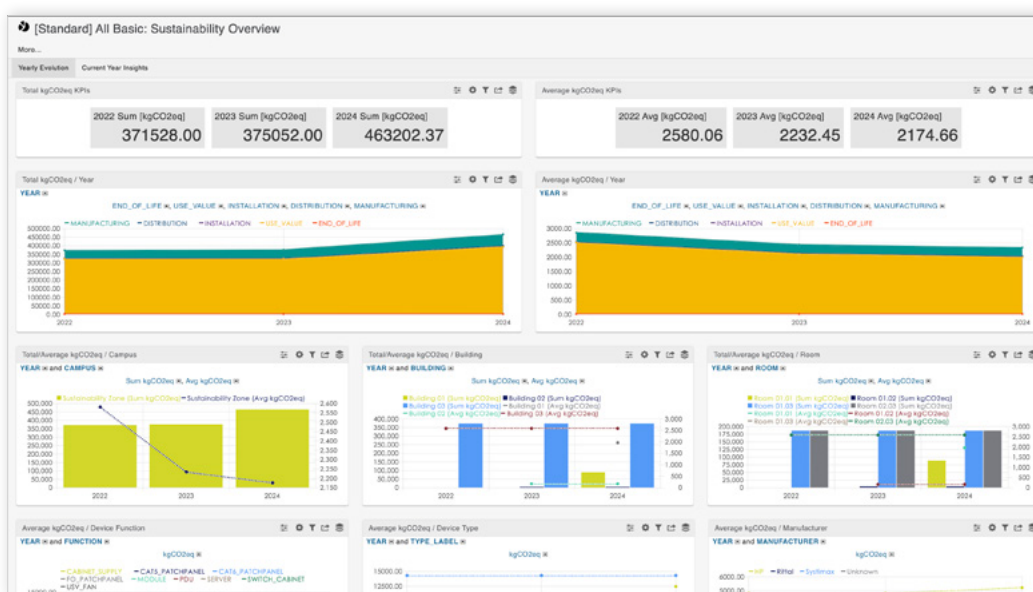


Why use this report?

You need to understand the environmental impact of your data center assets and monitor the progress of your carbon reduction efforts. Current year and year-over-year analysis helps track progress, identify trends, and support data-driven decisions to manage your environmental performance.



KPIs in this report

- **Total kgCO₂eq / Year**
- **Average kgCO₂eq/ Year**
- **kgCO₂eq by:**
 - Campus
 - Building
 - Room
 - Device function
 - Device Type
 - Manufacturer

Business Value



Detailed Emissions Insights: Identify specific areas that contribute most to the carbon footprint by breaking down emissions across various factors such as location, device type, function, and manufacturer.



Trend Analysis: Track changes in emissions over time to assess progress toward sustainability goals and pinpoint trends that indicate improvement or areas requiring immediate action.



Informed Decision-Making: Highlights key areas for carbon reduction, enabling targeted actions that maximize impact for sustainability efforts.



Cost Efficiency: Reducing emissions often aligns with lowering energy consumption, leading to operational cost savings over time.



Enhanced Reporting and Compliance: Provides a transparent basis for environmental reporting, supporting compliance with regulations and improving communication with investors, customers, and partners.

Prerequisites to run this report:

- ✓ FNT Command cbase
- ✓ FNT Sustainability