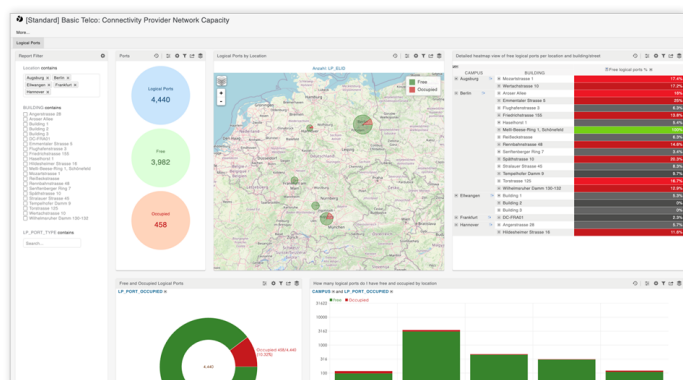


Connectivity Provider Network Capacity Report

Why use this report?






You need a clear overview of logical port availability and utilization across your data center infrastructure, broken down by location and port type. This information enables faster, more informed decisions for network planning, capacity management, and network connectivity resource optimization.



KPIs in this report

- **Total number of logical ports by:**
 - location
 - building
 - floor
 - room
- **Percentage of free logical ports by:**
 - location
 - building
 - floor
 - room
- **Number of logical ports by port type**
- **Number of free and occupied logical ports by:**
 - location
 - building
 - floor
 - room
- **Number of free and occupied logical ports by port type**

Business Value

- 
Maximized Network Capacity: Gain precise insight into port utilization to prevent both over- and under-provisioning, ensuring optimal use of existing infrastructure.
- 
Smarter Planning and Scalable Growth: Easily identify where capacity is available and where expansion is needed, enabling strategic planning to support business and traffic growth.
- 
Enhanced Operational Efficiency: Location- and port-type-specific visibility simplifies day-to-day operations, accelerates issue resolution, and improves maintenance planning.
- 
Reduced Capital Expenditure: Make the most of current logical port capacity to delay or avoid unnecessary hardware investments.
- 
Improved Transparency and Governance: Provide stakeholders with clear, data-backed insights to support reporting requirements and ensure accountable infrastructure management.

Prerequisites to run this report:

- ✓ FNT Command cbase
- ✓ FNT Command cline