



Comprehensive
Sustainability Tracking and
Reporting

Realistic Power Management
Schematics

Faster, More Connected Workflows

Dynamic and Customizable
Templates

FNT Command 14

Advanced features and functionalities for the modern infrastructure

The latest long-term release of FNT's flagship software solution for the integrated management of IT, data center and network infrastructures offers enhance-

ments that increase user efficiency, adaptability, and operational visibility.

HIGHLIGHTS AT A GLANCE

- **Cable Reuse & Tracking:** Store and reuse patch cables directly from warehouse inventory.
- **Flexible Documentation:** Support for single-side and planned cable infrastructure.
- **Full Audit Trail:** Complete historization of cable and port changes.
- **Realistic Power Schematics:** Vertical breaker alignment for real-world layouts.
- **IP-Based Telco Services:** Link services directly to logical ports for precision.
- **Streamlined Service Setup:** Bulk import service hierarchies and child services via Excel.
- **Geo-Based Cable Planning:** Estimate cable lengths using trench route and geodata.
- **Tray Management Enhancements:** Simplify duct splits and auto-calculate cable lengths.
- **ReconEngine Upgrades:** Improved matching, logging, and multi-device support.



- **Dynamic BGW/API:** Reinitialize without restart and perform bulk cable updates.
- **Advanced Search:** Filter devices by service type for faster configurations.
- **Connected Service Reports:** Consolidated insights across network elements.
- **Work Order Integration:** Launch workflows directly from network objects.
- **Inventory Hierarchies:** Organize warehouses into structured, manageable units.
- **Sustainability Reporting:** Track Scope 3 GHG emissions using ISO 14025-compliant tools.

A Closer Look at FNT Command 14

CORPORATE SUSTAINABILITY REPORTING

FNT supports comprehensive sustainability tracking with documentation and reporting of Scope 3 GHG emissions and other environmental data. Compliant with ISO 14025 and utilizing Environmental Product Declarations (EPDs), the solution includes a preconfigured analytics dashboard that offers insights to drive greener operations, regulatory compliance, and eligibility for sustainability incentives.



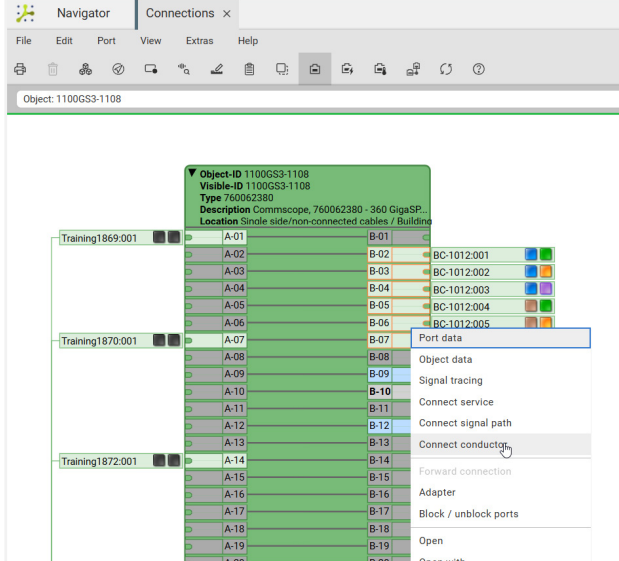
Full analytics dashboard shows high level success in CO2 footprint reduction and allows for drilling down into any dimension for details

CABLE AND OUTSIDE PLANT MANAGEMENT

Patch cables can be stored, tracked, and reused from warehouse inventory, supporting more efficient resource usage and minimizing waste. Cables can be documented flexibly—even single-side or non-connected ones – ideal for phased builds or planned infrastructure.

All cable actions are fully historized, ensuring a transparent audit trail. Visualization has been improved with customizable icons and wire color displays. Added flexibility

comes through the ability to assign multiple couplers per node and reconnect cut fibers in junction boxes. Export standardized splice plans and benefit from enhanced signal tracing, which now displays sub-modules for improved usability.



Single-side connected cable in Connections

Zone content

Single side/non-connected cables / Building					
Position	Visible-ID	Object type	Type	Cable / Conductors	Dis...
	1100GS3-1107	Commscope, 76006231	760062380	<input type="checkbox"/>	
	1100GS3-1108	Commscope, 76006231	760062380	<input type="checkbox"/>	
	1100GS3-1111	Commscope, 76006231	760062380	<input type="checkbox"/>	
	> FO-12-1201		12_Fiber_Bundle	<input checked="" type="checkbox"/>	
	> Training1869		hybrid for change type	<input checked="" type="checkbox"/>	
	> Training1871		hybrid for change type	<input checked="" type="checkbox"/>	
	> Training1874		hybrid for change type	<input checked="" type="checkbox"/>	
	> Training1874:001		hybrid for change type	<input checked="" type="checkbox"/>	
	> Training1878		hybrid for change type	<input checked="" type="checkbox"/>	

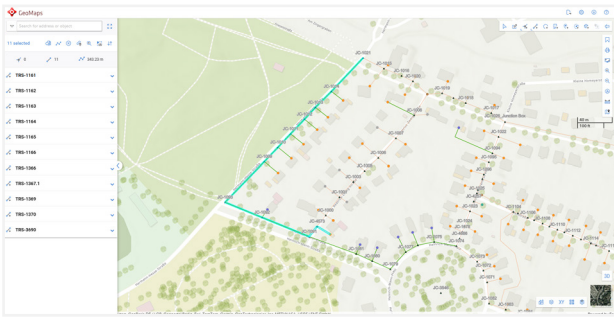
Paste

Multiple paste

Place (into zone)

Place cable (into zone)

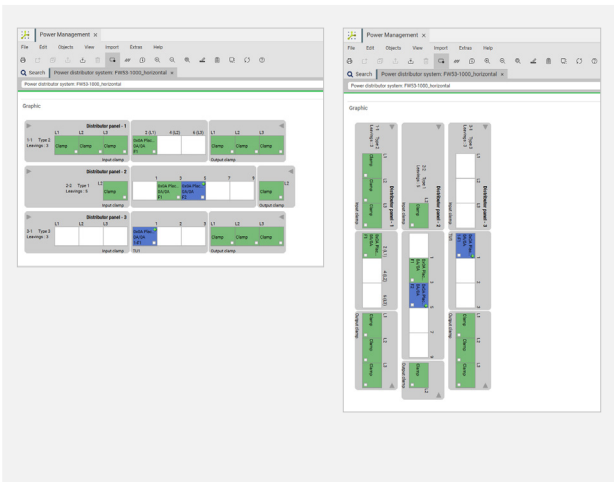
Single side/non-connected cables in Navigator



Selected route in FNT GeoMaps

POWER MANAGEMENT

Power distribution is easier to understand than ever. Realistic schematics with vertical circuit breaker alignment mirror real-world layouts, making infrastructure easier to navigate. At the same time, improved terminology ensures alignment with global standards, streamlining deployments in international environments.



Realistic representation of power distributors

TELCO

Telco operations benefit from advanced planning tools. Move bearers and reroute start/end points directly in Planning mode. IP-based services can be linked directly to logical ports for more accurate representation. Enhanced search filters make it easier to locate devices with matching service types during configurations. The enhanced Connected Service Report can be executed directly from a device or other related entities such as zones, cables, services, and ports. You can also now import and link child services via Excel for faster service creation.

TRAY MANAGEMENT & GEOMAPS

Tray and GeoMaps features offer powerful capabilities for real-world planning. Automatically calculate cable lengths based on tray routes—even without full documentation. New rules simplify duct and tray section splits, reducing complexity and boosting consistency. Multi-ducts can be opened and visualized in their physical context, and UI features like bookmarking and adjustable sidebars make work easier and more efficient.

GENERAL SYSTEM

- **ReconEngine** is more capable and configurable than ever. It now supports advanced outside plant scenarios including ducts-in-multiducts and multiple-device connections. With job-level logging, synchronization of logical port subdivisions, and customizable matching IDs, it offers improved traceability and better reconciliation. Tray and cable management interactions have also been enhanced for deeper integration and control.

- **Business Gateway (BGW)** can now be reinitialized on demand—no need to restart the full application. API enhancements allow bulk cable type updates, reconnection of uncut fibers, and complex queries using extended search operators. The new BGW for Signal Management introduces revision-safe cable rerouting. These updates ensure faster, safer, and more flexible operations.

- **Work Order Management processes** are now faster and more tightly integrated. With improved interaction between Command objects and requests, workflows can be launched directly from network elements. The integration between Command and Process Center streamlines operations, while configurable template selections in work orders enhance efficiency and user experience.

- **Inventory and Warehouse Management** significantly advances warehouse organization. Define hierarchical warehouse structures and assign devices more effectively. Manage stock thresholds both globally and within substructures to ensure timely restocking and minimize downtime.

ELEVATE YOUR INFRASTRUCTURE MANAGEMENT WITH FNT COMMAND 14.4

FNT Command 14.4 offers powerful tools and enhancements that provide robust support for data center, network and IT infrastructure management, planning, and documentation. Upgrade today to experience these new features and take your operations to the next level.