



- Automated documentation
- Asset and Inventory Management
- Target/actual comparison and reports
- Unidirectional interface
- Auto-discovery
- Change management support



// FNT Adaptive Interface Package for Infosim StableNet®

Automated integration of data from active network components and devices into FNT Command using Infosim StableNet®

The technical components within network infrastructures are constantly changing. Additional documentation effort is often necessary due to new requirements, replacement of faulty components, and regular component life cycles. Any undocumented changes in infrastructure, no matter how small, can have far-reaching consequences and undermine your ITIL compliance.

Thankfully, it is now easy to automate the documentation process using the FNT Adaptive Interface Package for Infosim StableNet®. As well as reducing workloads, this solution significantly improves the accuracy of data in FNT Command. Using a rule-based transfer process, it quickly identifies and automatically resolves any inconsistencies in your data. The

result is a reliable basis for planning future changes to your IT infrastructure.

Automated Comparison of Device Data

The unidirectional interface between FNT Command and Infosim StableNet® enables the automated importing and updating of data on chassis (routers, switches, load balancers, etc.), modules, submodules, and physical ports. When data is transferred to FNT Command, a target/actual comparison resolves any discrepancies between the actual physical network and the documented infrastructure.

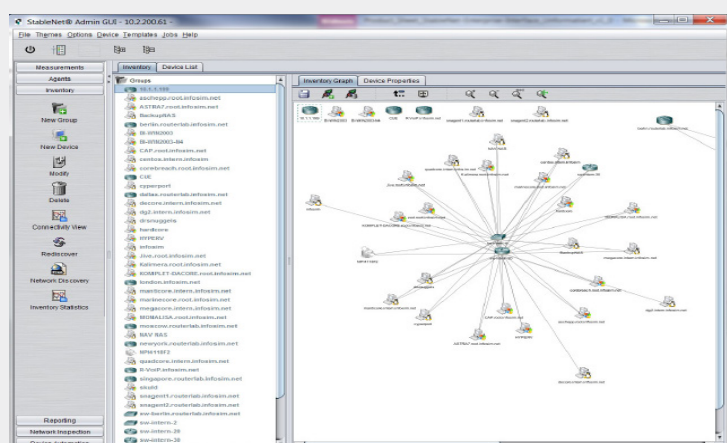
Applications

Typical applications for the FNT Adaptive Interface Package for Infosim StableNet® include:

- Automated documentation of active network components
- Automated target/actual comparison of the components documented in FNT Command with the devices detected by StableNet® as the input for an automated change management workflow
- Elimination of documentation gaps in IT infrastructure
- Fast and consistent overview of IT infrastructures during mergers and acquisitions
- Quick documentation for fast-growing companies
- Ideal support for audits and assessments

How the Interface Works

The StableNet agents use ping monitoring (ICMP echo) to check the accessibility and availability of devices. During the subsequent comparison with FNT Command, the detected device attributes are updated in their respective zones (e.g., campus, building, floor, room, cabinet). If new cards (GBIC, SFP, etc.) are installed in devices, these are automatically imported into FNT Command and added to the respective slot on the device.



Infosim StableNet® Inventory Graph

The FNT Adaptive Interface Package for Infosim StableNet® is used for the following:

- Population of network nodes with modules/cards
- Relocated and disconnected modules
- Documentation of active components
- Detection of active port data
- Inactive devices identified using "last seen" entry
- Updating of device and port data in FNT Command with attributes supplied by Infosim StableNet®
- Output of logs for addressing discrepancies

The integrated logging function enables automated generation of import reports with details, such as quantity of data records, transfer time, warning messages, etc. This makes it easier to track and check transmitted data so users can identify and resolve errors more quickly.

Reports and Workflow Processes

In addition to the documentation function, it is possible to create comprehensive reports based on the target/actual comparison. The results of the target/actual comparison provide a basis for controlling workflow processes in capacity and change management, e.g., moved objects, newly installed chassis, etc.

Technical Implementation

The FNT Adaptive Interface Package for Infosim StableNet® is implemented using FNT StagingArea and the FNT Gateway for Autodiscovery tool. Both of these products are installed and configured as part of the package.

System Requirements

To use the FNT Adaptive Interface Package for Infosim StableNet®, you will require Infosim StableNet® with REST API from version 8.1.0 as well as FNT Command C base from version 12.6 for all modules used.

About Infosim StableNet®

StableNet® is a largely self-configuring network, service, and IT management solution that combines autodiscovery, performance and fault management, automated root-cause analysis, and network configuration and change management in an integrated solution. The specific StableNet® function modules can be licensed individually and deployed to provide current network and IT infrastructure data for inventory management systems via the automated discovery/inventory function, for example, as when the product is used with FNT Command.

Thanks to comprehensive coverage of network and IT infrastructure, it is possible to display not only components but also services. This enables much faster implementation of solutions during operation, allowing largely automated modification as well as flexible scaling up to the most sophisticated enterprise and telco solutions.